



# GMT MONTHLY MEMBERSHIP PROGRESS REPORT

Results as of: 11/30/2024

Multiple District A

LOCATION: ONTARIO

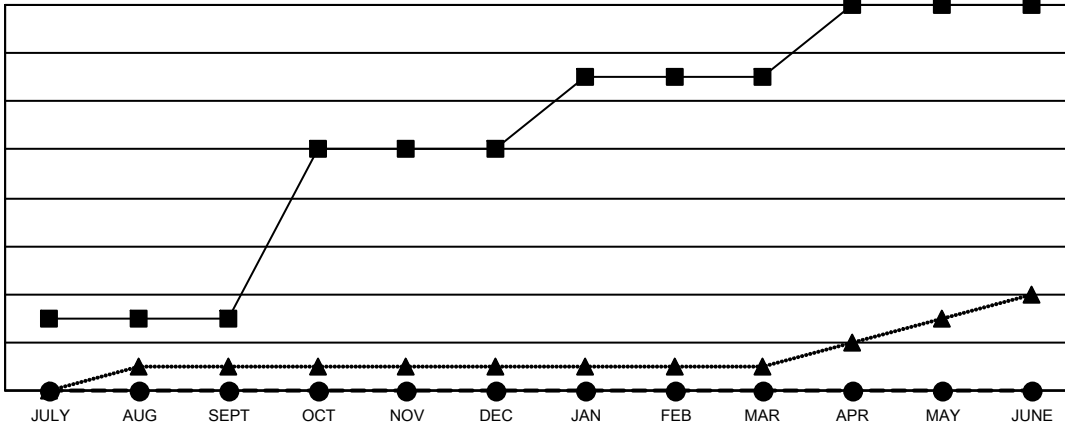
GMT: OPEN

GMT CA 2

| Clubs                 |               |           |               |
|-----------------------|---------------|-----------|---------------|
| RESULTS FOR 2024-2025 |               |           |               |
| QUARTER               | NEW CLUB GOAL | NEW CLUBS | DROPPED CLUBS |
| JULY/AUG/SEPT         | 3             | 0         | 1             |
| OCT/NOV/DEC           | 7             | 0         | 0             |
| JAN/FEB/MAR           | 3             | 0         | 0             |
| APR/MAY/JUNE          | 3             | 0         | 0             |

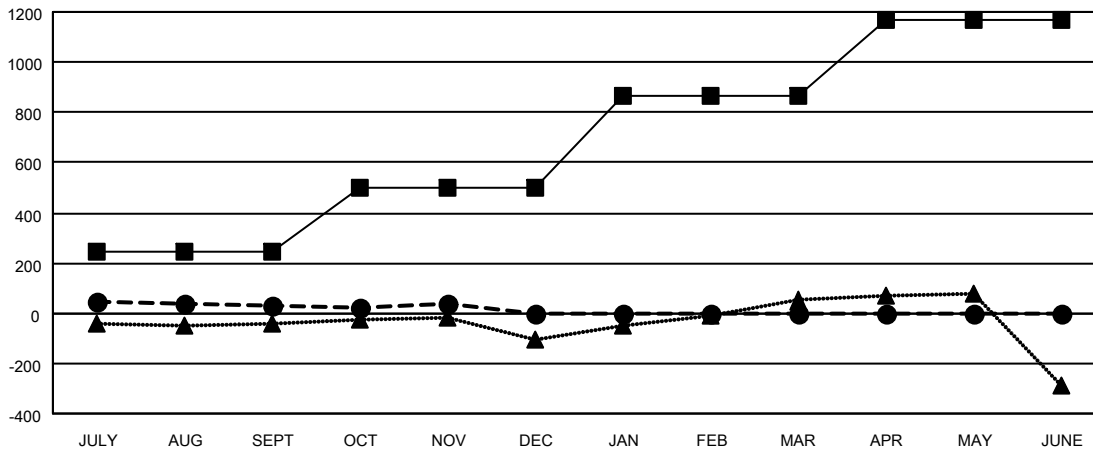
| Members               |                        |                      |  |
|-----------------------|------------------------|----------------------|--|
| RESULTS FOR 2024-2025 |                        |                      |  |
| QUARTER               | MEMBER GROWTH NET GOAL | MEMBER GROWTH ACTUAL | DROPPED MEMBERS ACTUAL (including transfers) |
| JULY/AUG/SEPT         | 245                    | 383                  | 294  |
| OCT/NOV/DEC           | 256                    | 309                  | 259  |
| JAN/FEB/MAR           | 365                    | 0                    | 0  |
| APR/MAY/JUNE          | 304                    | 0                    | 0  |

**GOALS AND ACTUAL NEW CLUBS CUMULATIVE**



- - CURRENT YEAR GOALS FOR NEW CLUBS
- - CURRENT YEAR ACTUAL NEW CLUBS
- ▲ - LAST YEAR ACTUAL NEW CLUBS

**GOALS AND ACTUAL MEMBERS CUMULATIVE**



- - MEMBER GROWTH NET GOAL
- - MEMBER GROWTH ACTUAL
- ▲ - LAST YEAR MEMBERSHIP ACTUAL

|  |   |  |
|--|---|--|
| DROPPED CLUBS: 1   | 212 CLUBS OF 513 ADDED 1 OR MORE NEW MEMBERS              | <b>GENDER DISTRIBUTION</b><br>MALE 7,620 (62.94%)<br>FEMALE 4,487 (37.06%) |
| <b>DROPPED MEMBERS</b><br>DECEASED 66<br>CLUB CANCELLED 0<br>OTHER 479<br><b>TOTAL 545</b> | <a href="#">CLICK HERE FOR CUMULATIVE MEMBERSHIP DATA</a> | TOTAL FAMILY UNIT MEMBERS 0<br>FAMILY MEMBERS PAYING HALF DUES 0           |